



ELSEVIER



<http://intl.elsevierhealth.com/journals/ijid>

# Presence and characterization of *Mycobacterium avium* subspecies *paratuberculosis* from clinical and suspected cases of Crohn's disease and in the healthy human population in India

A.V. Singh<sup>a</sup>, S.V. Singh<sup>a,\*</sup>, G.K. Makharia<sup>b</sup>, P.K. Singh<sup>a</sup>, J.S. Sohal<sup>a</sup>

<sup>a</sup> *Veterinary Microbiology Laboratory, Animal Health Division, Central Institute for Research on Goats, Makhdoom, Farah, Mathura (UP), 281 122 India*

<sup>b</sup> *Department of Gastroenterology and Human Nutrition, All India Institute of Medical Sciences, Ansari Nagar, New Delhi, India*

Received 7 November 2006; received in revised form 1 June 2007; accepted 21 June 2007

Corresponding Editor: William Cameron, Ottawa, Canada

## KEYWORDS

Crohn's disease;  
Inflammatory bowel  
disease;  
Johne's disease;  
*Mycobacterium avium*  
subspecies  
*paratuberculosis*;  
IS900 PCR;  
ELISA

## Summary

**Objectives:** To investigate and characterize *Mycobacterium avium* subspecies *paratuberculosis* (MAP) in patients with Crohn's disease, attendants of animals with suspected infection, and healthy humans, using multiple diagnostic tests.

**Methods:** A total of 119 samples (35 stool, 76 serum, three blood clots, and five biopsies) were collected from five patients with Crohn's disease, eight attendants of animals with Johne's disease, and 93 apparently normal control subjects (Agra region) from North India. Samples were screened for the presence of MAP by smear examination, culture of stool, blood clot and biopsies, and ELISA. Colonies obtained by culture were further characterized using polymerase chain reaction (PCR) with IS900 MAP-specific primers.

**Results:** Using all diagnostic modalities, MAP and/or MAP antibodies were identified in 100% (5/5) of subjects with Crohn's disease; 75.0% (6/8) of attendants of MAP infected animals were positive and 38.0% (27/71) of apparently normal controls were also positive. Most sensitive test was ELISA (100%, 5/5), followed by culture (80.0%, 4/5), and acid-fast staining. Ziehl–Neelsen staining was positive in 37.5% (3/8) of subjects with active animal husbandry practices. In 71 serum samples from control subjects, seroprevalence of MAP was 38.0% using indigenous protoplasmic antigens (PPA) and 36.6% using commercial PPA. Of the serum samples from the Crohn's disease patients, 100% (5/5) were positive by ELISA using indigenous PPA and 40.0% (2/5) were positive by ELISA using commercial PPA. IS900 PCR was used to characterize tiny colonies of MAP that grew extremely slowly on Herrold's egg yolk medium, and of 15 (42.8%) cultures, 14 (93.3%) were typed as MAP.

\* Corresponding author. Tel.: +91 565 2763260x269; fax: +91 565 2763246.  
E-mail address: [shoorvir.singh@gmail.com](mailto:shoorvir.singh@gmail.com) (S.V. Singh).

**Conclusions:** Paper documented the presence of MAP in all patients with Crohn's disease, in some animal attendants who had the history of working with goat herds infected with Johne's disease and in few normal healthy individuals. Presence of Ziehl Neelsen positive MAP. In the stool of attendants working with MAP-infected animals was unique to humans. ELISA based on antigens derived from indigenous MAP 'bison type' genotype of goat origin was most sensitive modality for screening Crohn's disease patients.

© 2007 International Society for Infectious Diseases. Published by Elsevier Ltd. All rights reserved.

## Introduction

In India, (most populous country in the world after China), enteric infections are the cause of major health problems; Crohn's disease was first reported from India in 1986. Although *Mycobacterium avium* subspecies *paratuberculosis* (MAP) is endemic in the ruminant population of this country, the association of MAP with enteritis or Crohn's disease has not been investigated so far.

Crohn's disease and ulcerative colitis, collectively known as inflammatory bowel disease (IBD), are complex disorders reflected by wide variations in clinical practice. IBD has long been considered to affect the populations of North America and Europe more than those of Asia.<sup>1</sup> Crohn's disease was considered almost non-existent in India until 1986.<sup>2</sup> In the last 10 years, however, Crohn's disease has been reported more frequently from different parts of India, especially the south.<sup>3–8</sup> These studies are only tip of the iceberg, since diagnostic facilities are restricted to few metropolitan cities, but the largest risk populations mainly live in villages and small towns. Abdominal ailments are the leading causes of sickness and death in large sections of the 1.2 billion plus human population. Recently very high prevalence of ulcerative colitis has been reported from Northern India.<sup>9</sup> Pain and frequent bouts of diarrhea overlap as clinical signs in most of the cases of abdominal illnesses. Therefore, differential diagnosis between these two diseases before actual treatment starts, is important.

Though there is no consensus on the etiology of Crohn's disease. MAP has been reported from cases of Crohn's disease worldwide.<sup>10–17</sup> Recently, there has been renewed interest in the possible association of MAP and Crohn's disease, largely due to the isolation of genetically identical pathogenic MAP from patients with Crohn's disease.<sup>17</sup> Though, Crohn's disease was first reported in India in 1986, the association of MAP with cases of Crohn's disease has not yet been studied, primarily due to a lack of indigenous diagnostic kits and reagents. MAP is endemic in the ruminant population of the country.<sup>18–23</sup> A pilot scale study was undertaken to estimate the presence and association of MAP and antibodies in clinical cases of Crohn's disease, in suspected cases of IBD in animal attendants, and in the healthy human population, using multiple diagnostic tests.

## Materials and methods

The presence of MAP was estimated in chronic cases of Crohn's disease, in suspected (in-contact) cases of IBD in animal attendants, and in healthy persons by smear examination, culture (stool, blood clot, and biopsies), and ELISA (using indigenous soluble PPA from MAP 'bison type' of goat origin and commercial PPA from MAP 'bovine' genotype). MAP cultures were characterized using specific IS900 PCR.

## Biopsies and stool and blood samples

A total of 119 samples (35 stool, 76 serum, three blood clots, and five biopsies) were collected from 93 healthy persons, eight animal attendants suffering with long-term colitis (IBD), and five patients with chronic Crohn's disease.

Crohn's disease patients: Samples (stool, blood clots, serum, and biopsies) were collected from five patients diagnosed with chronic Crohn's disease at the Gastroenterology Department of All India Institute for Medical Sciences (AIIMS), New Delhi. These patients were diagnosed on the basis of history, clinical picture, clinical pathology, and colonoscopy. Blood samples were also collected from three patients. These chronic Crohn's disease patients had no history of contact with animals and were undergoing treatment for the Crohn's disease at AIIMS, New Delhi.

In-contact animal attendants with suspected infection: Eight stool samples were obtained from animal attendants who had worked for the past 10–15 years with goatherds endemic for Johne's disease<sup>19,23–27</sup> and were chronic colitis patients (suspected for Crohn's disease on the basis of history, symptoms, and treatment received at human dispensary at Central Institute for Research on Goats (CIRG), Makhdoom. On personal interview they were found to be silently suffering from sub-clinical and clinical symptoms of IBD and/or colitis (weight loss, chronic abdominal pain, frequent bouts of loose motions, reduced appetite, anemia, weakness, tendency to get tired easily). These workers were very poor, illiterate, and could not afford the cost of medical assistance, therefore, they neither continued with treatment nor did seek advance medical interventions. These workers also had their own stock of goats and sheep. Sampling was difficult since they lost hope of getting cured and only stool samples were submitted for screening.

Healthy population: Twenty two stool and eight serum samples were obtained from healthy persons residing in and around CIRG campus, Makhdoom. Of these persons, one had been handling cultures of MAP since 1992 and maintained normal health, while one had history of consuming raw cow's milk for few weeks and was suffering from clinical Crohn's disease (high erythrocyte sedimentation rate, weight loss, repeated bouts of loose motions, anemia, low body weight, unable to take stress, etc.). Sixty three serum samples were randomly collected from healthy persons in Agra city (North India), who were easily convinced to volunteer for the study.

## Processing of biopsies, stool and blood samples for isolation of MAP

Approximately 2 g of stool sample was concentrated by centrifugation and stained with Ziehl–Neelsen (ZN) stain,

**Table 1** Screening of stool samples by smear examination, culture, and IS900 PCR for the presence of *Mycobacterium avium* subspecies *paratuberculosis*

Study group	Stool samples	Positive in ZN staining [n (%)]	Positive in cultures [n (%)]	PCR from MAP cultures [n (%)]
Crohn's disease patients <sup>a</sup>	5	0	4 (80.0)	4 (80.0)
Animal attendants with suspected infection <sup>b</sup>	8	3 (37.5)	5 (62.5)	5 (62.5)
Healthy people <sup>c</sup>	22	0	6 (27.2)	5 (22.7)
Total	35	3 (8.5)	15 (42.8)	14 (40.0)

ZN, Ziehl–Neelsen; PCR, polymerase chain reaction; MAP, *Mycobacterium avium* subspecies *paratuberculosis*.

<sup>a</sup> Confirmed cases of Crohn's disease at the All India Institute for Medical Sciences, New Delhi.

<sup>b</sup> Working in goatherds endemic for Johne's disease, and with different degrees of symptoms for colitis or inflammatory bowel disease (chronic stomach pain, constipation, bouts of loose motions, weakness, tiredness, anemia, etc.).

<sup>c</sup> Including one laboratory worker who had been culturing MAP since 1992 and one with a history of raw cow's milk consumption.

MAP was isolated as per the method of Whipple and co-workers<sup>28</sup> with some modifications.<sup>26</sup> Briefly, 2 g of stool or 2 cubic cm of tissue biopsy or 2 g of blood clot was finely ground in a sterilized pestle and mortar and suspended in water. Stool samples were centrifuged and middle layer was further decontaminated. In biopsies and blood clots the suspension in water was allowed to stand for 5–6 hours at room temperature and supernatant was decontaminated in 0.9% hexadecyl pyridinium chloride (HPC) and were then kept undisturbed for 12–18 hours at room temperature. The supernatant was discarded and 0.2 ml of the sediment was inoculated on slants of Herrold's egg yolk medium (three containing mycobactin J and one without mycobactin J). Antibiotics or anti-fungal agents were not added to the medium. Slants were incubated at 37 °C and slants were screened for the appearance of colonies every 15 days.

### Enzyme-linked immunosorbent assay (ELISA)

The indigenous ELISA kit initially developed for the screening of goats<sup>27</sup> was standardized for humans. Soluble PPA was prepared from the native 'bison type' genotype of MAP isolated from a terminal case of Johne's disease in a goat.<sup>29</sup> MAP frequently isolated from the goat, sheep, cattle, and buffalo populations of North India have been genotyped as 'bison type' (Whittington RJ, 2001, personal communication).<sup>29</sup> Purified commercial antigen (PPA) of 'bovine' MAP was procured from Allied Monitor, Inc., USA. Antigens from 'bison type' and 'bovine' MAP were standardized at 0.1 µg and 2.0 µg per well of the microtiter plate, respectively. Serum samples were used in 1:50 dilution and anti-human horseradish peroxidase conjugate (Sigma) in 1:8000 dilution. Serum samples from culture-positive Crohn's disease patients and culture-negative healthy persons were used as positive and negative controls, respectively. Optical densities (OD) were transformed and expressed as sample-to-positive (S/P) ratios.<sup>30</sup>

### IS900 PCR (Colony PCR)

Positive MAP cultures were processed for DNA isolation as per van Embden et al.<sup>31</sup> and van Soolingen et al.<sup>32</sup> DNA was amplified by PCR using specific IS900 primers.<sup>33</sup> The 229-bp fragment targeting the specific IS900 sequence was amplified from template DNA. Briefly, in a volume of 50 µl of reaction mixture, 1 µl of each primer (forward primer: 150 C 24-mer; reverse primer: 921, 25-mer), 22 µl red dye Master Mix (Taq

DNA polymerase, dNTPs, reaction buffer with 1.5 nM magnesium chloride), 24 µl de-ionized water, and 2 µl of template DNA were included (total volume 50 µl). A total of 35 cycles was performed in a thermocycler (MJ Research) for complete amplification reaction. The total time taken for 36 cycles was 1.20 h. The reaction conditions were: initial denaturation at 94 °C for 4 min (1 cycle), denaturation at 94 °C for 10 s, annealing at 61 °C for 10 s, extension at 72 °C for 10 s (35 cycles), and a final extension at 72 °C for 10 min. The presence and yield of the specific PCR product (229 bp) was analyzed by 1.8% agarose ethidium bromide gel electrophoresis. Positive (MAP 'bison type') and negative (sterile liguipure water) controls were also run to check for contamination.

## Results

### Smear examinations

Of the smears of stool samples taken from the animal attendants with suspected infection, 37.5% (3/8) were positive for acid-fast bacilli (AFB) indistinguishable from MAP. None of the stool samples from Crohn's disease patients and healthy persons was positive for AFB. Cumulatively, of the 35 stool samples, 8.5% were positive. Of the three positive from the suspected group, two were also positive in culture of stool and one case was detected independently (Tables 1 and 2).

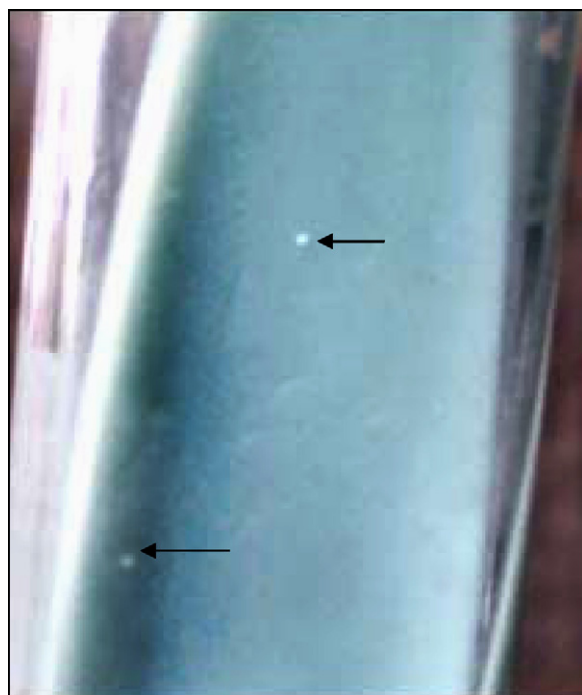
### Isolation and characterization of MAP colonies

The majority of MAP colonies grew at around 75 days of incubation on Herrold's egg yolk medium with mycobactin J (Allied Monitor, Inc., USA). Primary colonies were identified on the basis of culture characteristics, bacterial morphology, slow growth, mycobactin J dependency, acid-fastness, and by IS900 PCR.

**Table 2** Comparisons of smear examination and culture of stool samples

	Culture positives	Culture negatives
Smear positives <sup>a</sup>	2	1
Smear negatives	13	19

<sup>a</sup> Ziehl–Neelsen staining.



**Figure 1** *Mycobacterium avium* subspecies *paratuberculosis* colonies from stool sample of Crohn's disease patient (A35).

**Isolation of MAP from stool samples:** Of the 35 stool samples screened by culture, 15 (42.9%) were positive for the presence of MAP. (Figure 1). Maximum positives (80.0%) samples were from the Crohn's disease patients, followed by the animal attendants with suspected infection (62.5%) and healthy persons (27.2%) (Table 1). Animal attendants were patients with chronic stomach problems (IBD) and had continuous abdominal pain. In the healthy group, the person handling MAP cultures and the person with a history of raw milk consumption were among those with positive cultures.

**Isolation of MAP from biopsies of Crohn's disease patients:** of the five Crohn's disease patients, four (80.0%) were positive for MAP in culture of both biopsies and stool samples.

**Isolation of MAP from blood clots of Crohn's disease patients:** Of the three blood clots, two (66.6%) were positive. These individual were also positive for MAP in stool and biopsy cultures.

**Comparison of smear examination and stool culture:** Of the 35 stool samples, 8.5% and 42.8% were positive in smear examination and culture, respectively. The 5.7% of samples were positive by two tests and 54.2% of samples were negative in the two tests. The 2.8% and 37.1% of samples were positive independently in smear examination and culture, respectively. Cumulatively, two tests detected 45.7% stool samples as positives (Table 2).

### ELISA

All five Crohn's disease patients were positive by ELISA using indigenous PPA, whereas in commercial PPA only two were positives. The indigenous antigen (PPA) had better correlation with culture (stool and biopsies) from Crohn's disease patients (Table 3). In healthy persons and Crohn's disease patients, seroprevalence of MAP was 42.1% [(32/76) using indigenous PPA] and 40.8% [(31/76) using commercial PPA]. Cumulatively, the two antigens detected 57.8% (44/76) of persons as positives (Table 4). Only 25.0% of serum samples were positive by both antigens. The 15.7% of serum samples were positive exclusively by indigenous PPA and 17.1% were positive exclusively by commercial PPA (Table 4).

### Polymerase chain reaction (PCR)

Of the 21 cultures (15 stool samples, four biopsies, and two blood clots) processed for DNA isolation and IS900 PCR, 20 (95.2%) were amplified giving the specific 229-bp PCR product (Figure 2). All the cultures from Crohn's disease patients and animal attendants with suspected infection were characterized as MAP. Of the six cultures from healthy persons, five (83.3%) were positive (Table 1).

### Discussion

There is increasing evidence that Crohn's disease may have an infectious etiology, and the most plausible candidate is MAP. Intriguingly, Koch's postulates have been fulfilled for MAP and Crohn's disease, though they have not been met for *Mycobacterium leprae* and leprosy.<sup>34</sup> The problems in diagnosing MAP infections in humans are primarily due to difficulties in growing MAP in vitro.<sup>35</sup> Achieving growth in artificial medium may be even more difficult when the organism is

**Table 3** Screening of stool and serum samples from Crohn's disease patients<sup>a</sup> by smear examination, culture, IS900 PCR, and ELISA test kit

Lab code	Age (years)	Sex	ZN staining	Stool culture	IS900 PCR	Plate ELISA kit	
						PPA from MAP 'bison type' strain (indigenous)	PPA from MAP 'bovine' strain (commercial)
A35	35	F	—	+	+	+	+
A42	42	M	—	+	+	+	—
A45	35	M	—	+	+	+	—
A49	32	M	—	—	—	+	—
A53	30	M	—	+	+	+	+

ZN, Ziehl–Neelsen; PCR, polymerase chain reaction; PPA, protoplasmic antigens; MAP, *Mycobacterium avium* subspecies *paratuberculosis*; M, male; F, female.

<sup>a</sup> Diagnosed and undergoing treatment at the Gastroenterology Department of the All India Institute of Medical Sciences, New Delhi.

**Table 4** Comparative evaluation of protoplasmic antigens of *Mycobacterium avium* subspecies *paratuberculosis* (MAP) 'bison type' and MAP 'bovine' origin for the sero-diagnosis of antibodies against MAP by ELISA test

	Positives with PPA 'bison type'	Negatives with PPA 'bison type'
Positives in PPA 'bovine' strain	19	12
Negatives in PPA 'bovine' strain	13	32

PPA, protoplasmic antigens.

initially in its cell-wall-deficient form.<sup>35–37</sup> The present study has also revealed that MAP colonies of human origin are highly fastidious and extremely slow growing – only tiny colonies were visible even after prolonged incubation. None of the stool samples from Crohn's disease patients and healthy persons was positive in ZN staining. The presence of ZN negative MAP in Crohn's disease patients is compatible with the theory that MAP in man is present in the cell-wall-deficient form (spheroplasts) frequently reported in the literature.<sup>36,38</sup> Interestingly three of the eight stool samples from the animal attendants working with goatherds endemic for Johne's disease were ZN positive. Prior to this report there was only one report of ZN positive IS900 geno-typed MAP, identified in a hemophiliac man with AIDS.<sup>39</sup> The ZN positive animal attendants with suspected infection may be indicative of recent feco-oral contamination from goats with Johne's disease, or these animal attendants may have fecal-oral contamination in addition to chronic ZN-MAP infection as revealed by symptoms of chronic colitis. ZN positive colonies grew faster than ZN negative colonies.

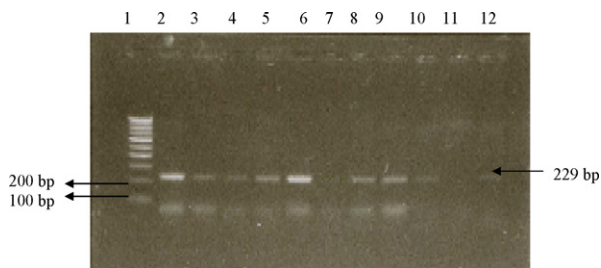
In culture, 42.8% stool samples were positive for MAP infection. The presence of MAP was highest in Crohn's disease patients, followed by animal attendants with suspected infection and healthy persons. The recovery of MAP from biopsies and stool samples of Crohn's disease patients confirmed the association between MAP and Crohn's disease. The high presence of MAP in animal attendants correlated with

the high prevalence of MAP in goatherds.<sup>19,23–25,27</sup> Attendants may have contracted infection from endemic herds. The isolation of MAP from 27.2% of healthy persons may be due to the high presence of MAP in the environment. Of the three persons detected in the healthy group, one had been handling MAP cultures since 1992 and one had a history of raw cow's milk consumption and typical clinical symptoms of Crohn's disease. Fourteen of the 15 positive cultures were IS900 positive by PCR (colony PCR).

This study revealed high presence of MAP in North Indian human population with and without Crohn's disease. Similar high prevalence of MAP has been reported in Crohn's disease patients and controls by other workers.<sup>13,17,40,41</sup> Sensitivities of culture and ELISA were similar for the detection of MAP in humans. Sanderson et al.<sup>42</sup> reported that culture was less sensitive as compared to PCR. IS900 PCR has frequently been used to confirm MAP in cases of Crohn's disease and controls. Mishina et al.<sup>43</sup> employed reverse transcriptase PCR using MAP-specific primers (IS900) on total RNA from ileal mucosal specimens of Crohn's disease patients and controls with ulcerative colitis and colon cancer. Bull et al.<sup>13</sup> showed that the detection rates for MAP in Crohn's disease depended critically on the validation of the methods used. High proportions of MAP have been reported by using improved culture and IS900 PCR.<sup>44</sup> When these tests are optimal almost everybody with Crohn's disease could be found to be infected with MAP.<sup>45</sup> The presence of MAP colonization of the gut in a minority proportion of persons without Crohn's disease is consistent with widespread environmental exposure to these pathogens, as exemplified also in the population biology of *Mycobacterium tuberculosis*, *Streptococcus pneumoniae*, *Neisseria meningitidis*, and *Helicobacter pylori*.<sup>45</sup>

In a significant finding, MAP was isolated from two of three blood clots left after harvesting of serum from Crohn's disease patients. These individual were also positive in biopsy and stool cultures. In a study on MAP bacteremia, Naser et al.<sup>14</sup> cultured MAP from the blood of 14 (50.0%) patients with Crohn's disease and two (22.0%) with ulcerative colitis. Presence of MAP in blood from patients with Crohn's disease should not be surprising since in animals with Johne's disease, MAP infection is systemic.<sup>46</sup> MAP is secreted into milk<sup>47</sup> and infiltrates the extra-intestinal tissues and the bloodstream of animals.<sup>46</sup> Viable MAP has been cultured from commercial pasteurized milk in UK<sup>48</sup> and USA,<sup>49</sup> and from potable chlorinated municipal water in USA.<sup>43</sup> These may be potential sources of MAP, if it is eventually accepted that MAP is zoonotic.<sup>50</sup> MAP has also been cultured from the milk of two women with active Crohn's disease.<sup>51</sup>

As reported by Bernstein et al.,<sup>30</sup> the goat ELISA<sup>27</sup> initially developed for screening of goats for Johne's disease was successfully adapted to screen human beings. Using two antigens of animal origin (goat and bovine), the seroprevalence of MAP was high in human subjects from North India,



**Figure 2** IS900 PCR products obtained with the DNA from stool and biopsy culture positive isolates. Lane 1: marker (100-bp ladder); lane 2: A43 (DNA from Crohn's disease patient biopsy culture); lane 3: A54 (DNA from Crohn's disease patient biopsy culture); lane 4: A38 (DNA from Crohn's disease patient blood clot culture); lane 5: A35 (DNA from Crohn's disease patient stool culture); lane 6: positive control ('Bison type' *Mycobacterium avium* subspecies *paratuberculosis* DNA); lane 7: negative control (deionized distilled water); lane 8: A13 (DNA from a suspected patient stool culture); lane 9: A14 (DNA from a suspected patient stool culture); lane 10: A17 (DNA from a suspected patient stool culture); lane 11: CDF1 (DNA from a healthy person stool culture); lane 12: CDF2 (DNA from a healthy person stool culture).

therefore indicating exposure from an animal source. However, indigenous antigen was superior to commercial antigen in detecting MAP in Crohn's disease patients. Uniquely, agreement between the two antigens was high when used in human subjects, but was either low or nil when used in goats<sup>27</sup> and buffaloes.<sup>52</sup> Similar to the present findings, Chiodini et al.<sup>10</sup> reported significantly higher levels of IgG antibodies to MAP lysate in animal attendants than in healthy humans. In animals, culture was the most sensitive of the multiple diagnostic tests used,<sup>53</sup> and positives in ELISA were always lower than in culture.<sup>52,53</sup> Though Hermon-Taylor reported 28 different strains of MAP and some specific to particular species like sheep and cattle,<sup>12</sup> in North India, MAP 'bison type' was the most prevalent genotype in animals.<sup>52,53</sup> Collins et al.<sup>40</sup> detected MAP in significantly higher numbers of patients with Crohn's disease than in controls. Similarly in this study, all the Crohn's disease patients were positive by ELISA as compared to 80.0% by culture. Bernstein et al.<sup>30</sup> in a population-based study, reported 35.0% seropositivity rates for all groups, unlike the present findings and there was no difference in rates between Crohn's disease patients, ulcerative colitis patients, and healthy controls or non-affected siblings. Though BCG vaccination status for randomly selected individuals was not known, Collins et al.<sup>40</sup> showed that BCG vaccination did not affect the level of serum antibody to MAP. BCG vaccination is, however, not popular in India. High presence of MAP was recorded in culture and all the isolates were characterized as MAP using IS900 PCR. Similarly Collins and co-workers,<sup>40</sup> in a subset of IBD patients, reported association with MAP or similar fastidious mycobacterial species. A reported case control colonoscopy plus biopsy study of a nested cohort of the study population with a nested PCR for MAP revealed a positive rate of 32.0% among controls,<sup>54</sup> a rate that is comparable to the seropositive rate in another study.<sup>30</sup> A PCR study from the UK reported a positive rate of 26.0% in control tissues.<sup>13</sup>

Presence of MAP in pasteurized milk supplies may be an important link to the high presence in humans.<sup>48,55,56</sup> Widespread infection with MAP in domestic animals has been reported in the Agra region of North India.<sup>18,19,23–27,52,53</sup> An additional potential source for humans to contract MAP infection is from drinking water.<sup>43</sup> High (21.0–70.0%) herd prevalence of MAP has been reported from Western Europe and Northern America.<sup>12</sup> Therefore, either in the food chain or in water supplies, it is inevitable that humans sharing the same geographic areas with animals that are extensively infected, are regularly exposed to MAP. This first Indian study is in agreement to some extent with the observations of Hermon-Taylor and co-workers<sup>44</sup> that "problems caused by MAP constitute a public health issue".

## Conclusions

IS900 characterization of positive cultures in stool and biopsies from confirmed cases of Crohn's disease conclusively prove the association between MAP and Crohn's disease. The positive cultures from animal attendants with suspected infection and healthy persons confirm the high presence of MAP in the investigated human population of North India. This is the first report of ZN positive forms of MAP in animal attendants. MAP was detected in all the Crohn's disease patients by ELISA using indigenous PPA. The high reactivity

of commercial PPA indicated involvement of a different genotype in humans. Indigenous PPA from MAP 'bison type' genotype of goat origin can be useful in screening for Crohn's disease. This study is the first to report on association between MAP and Crohn's disease in India. High presence of MAP in animal attendants and healthy persons shows that besides association with Crohn's disease, MAP may also play a role in cases of colitis and other abdominal ailments in India.

## Acknowledgements

The authors wish to thank the Director, CIRG, Makhdoom for providing the necessary facilities for this work.

*Conflict of interest:* No conflict of interest to declare.

## References

1. Selby W. Pathogenesis and therapeutic aspects of Crohn's disease. *Vet Microbiol* 2000;**77**:505–11.
2. Antia FP. Crohn's conundrum in Indians. *Indian J Gastroenterol* 1986;**5**:79–80.
3. Venugopalen S, Radhakrishnan S, Rajachandrasekharan R. Crohn's disease (a study of 21 cases). *Indian J Surg* 1980;**42**:388–96.
4. Venkatkrishnan L, Thakaran A, Francis J, Ramesh GN, Philip M, Augustine P. Crohn's disease – analysis of 26 cases. *Indian J Gastroenterol* 1995;**14**:58.
5. Pulimood AB, Ramakrishna BS, Kurian G, Peter S, Patra S, Mathan VI, et al. Endoscopic mucosal biopsies are useful in distinguishing granulomatous colitis due to Crohn's disease from tuberculosis. *Gut* 1999;**45**:537–41.
6. Pai CG, Khandge GK. Is Crohn's disease rare in India? *Indian J Gastroenterol* 2000;**19**:17–20.
7. Amarapurkar D, Patel N. Crohn's disease in India. *Gastroenterol Today* 2002;**2**:73–5.
8. Amarapurkar DN, Patel ND, Amarapurkar AD, Agal S, Baigal R, Gupte P. Tissue polymerase chain reaction in diagnosis of intestinal tuberculosis and Crohn's disease. *J Assoc Physicians India* 2004;**52**:863–7.
9. Sood A, Midha V, Sood N, Bhatia AS, Avasthi G. Incidence and prevalence of ulcerative colitis in Punjab, North India. *Gut* 2003;**52**:1587–90.
10. Chiodini RJ, Thyar RW, Coutu JA. Presence of antibodies of *Mycobacterium paratuberculosis* in animal health care workers. In: Chiodini RJ, Hines ME, Collins MT, editors. *Proceedings of the Fifth International Colloquium on Paratuberculosis*. Madison, WI, USA: International Association for Paratuberculosis, Inc.; 1996. p. 324–8.
11. Fidler HM, Thurrell W, Johnson NM, Rook GA, McFadden JJ. Specific detection of *Mycobacterium paratuberculosis* DNA associated with granulomatous tissue in Crohn's disease. *Gut* 1994;**35**:506–10.
12. Hermon-Taylor J. *Mycobacterium avium* subspecies *paratuberculosis* is a cause of Crohn's disease. *Gut* 2001;**49**:755–60.
13. Bull TJ, McMinn EJ, Sidi-Boumedine K, Skull A, Durkin D, Neild P, et al. Detection and verification of *Mycobacterium avium* subsp *paratuberculosis* in fresh ileocolonic mucosal biopsy specimens from individuals with and without Crohn's disease. *J Clin Microbiol* 2003;**41**:2915–23.
14. Naser SA, Ghobrial G, Romero C, Valentine JF. Culture of *Mycobacterium avium* subspecies *paratuberculosis* from the blood of patients with Crohn's disease. *Lancet* 2004;**364**:1039–44.
15. Autschbach F, Eisold S, Hinz U, Zinser S, Linnebacher M, Giese T, et al. High prevalence of *Mycobacterium avium* subsp. *paratuberculosis* IS900 DNA in gut tissues from individuals with Crohn's disease. *Gut* 2005;**54**:944–9.

16. Geary RB, Aitken JM, Roberts RL, Ismail S, Keenan K, Barclay ML. Images of interest. Gastrointestinal: *Mycobacterium avium paratuberculosis* and Crohn's disease. *Gastroenterol Hepatol* 2005;20:1943.
17. Sechi LA, Scanu AM, Mollicotti P, Cannas S, Mura M, Dettori G, et al. Detection and isolation of *Mycobacterium avium* subspecies *paratuberculosis* from intestinal mucosal biopsies of patients with and without Crohn's disease in Sardinia. *Am J Gastroenterol* 2005;100:1529–36.
18. Vihan VS, Singh N, Singh SV. Preliminary observations on fecal culture test for the detection of *Mycobacterium paratuberculosis* in goats. *Indian J Anim Sci* 1989;59:1522–4.
19. Singh N, Singh SV, Gupta VK, Sharma VD, Sharma RK, Katoch VM. Isolation and identification of *Mycobacterium paratuberculosis* from naturally infected goatherds in India. *Indian J Vet Pathol* 1996;20:104–8.
20. Munjal SK, Boehmer J, Baveybach M, Strutzberg-Minder K, Homuth M. Evaluation of a LAM ELISA for diagnosis of paratuberculosis in sheep and goats. *Vet Microbiol* 2004;103:107–14.
21. Raut A, Manju A, Kumar B, Sethi RK. Prevalence of paratuberculosis in breeding buffalo bulls at organized farms. *Proceedings of the fourth Asian Buffalo Congress on Buffalo for Food Security and Rural Employment*. New Delhi, India; 2003, p. 18.
22. Sivakumar P, Tripathi BN, Singh N. Detection of *Mycobacterium avium* subsp. *paratuberculosis* in intestinal and lymph node tissues of water buffaloes (*Bubalus bubalis*) by PCR and bacterial culture. *Vet Microbiol* 2005;108:263–70.
23. Singh SV, Singh AV, Singh R, Sandhu KS, Gupta VK. Survey of ruminant population of Northern India for the incidence of *Mycobacterium avium* subsp. *paratuberculosis* infection. In: Manning EJB, Nielsen SS, editors. *Proceedings of the eighth International Colloquium on Paratuberculosis*. Madison, WI, USA: International Association for Paratuberculosis, Inc.; 2005.
24. Singh SV, Singh N. *Mycobacterium paratuberculosis* in goats and its diagnosis in India in the next millennium. *Intas PoliVet* 2000;1:167–9.
25. Singh SV, Vihan VS. Incidence of *Mycobacterium avium* subsp. *paratuberculosis* in clinically suspected small ruminants. *Indian J Small Ruminant* 2004;9:56–9.
26. Singh N, Vihan VS, Singh SV, Gupta VK. Prevalence of Johne's disease in organized goat herds. *Indian J Anim Sci* 1998;68:41–2.
27. Singh SV, Singh AV, Singh PK, Gupta VK, Kumar S, Vohra J. Seroprevalence of paratuberculosis in young kids using 'bison type', *Mycobacterium avium* subsp. *paratuberculosis* antigen in plate ELISA. *Small Rumin Res* 2007;70:89–92.
28. Whipple DL, Callihan DR, Jarnagin JL. Cultivation of *Mycobacterium paratuberculosis* from bovine fecal specimens and a suggested standardized procedure. *J Vet Diagn Invest* 1991;3:368–73.
29. Sevilla I, Singh SV, Garrido JM, Aduriz G, Rodriguez S, Geijo MV, et al. Molecular typing of *Mycobacterium avium* subspecies *paratuberculosis* strains from different hosts and regions. *Rev Sci Tech* 2005;24:1061–6.
30. Bernstein CN, Blanchard JF, Rawsthorne P, Collins MT. Population-based case control study of seroprevalence of *Mycobacterium paratuberculosis* in patients with Crohn's disease and ulcerative colitis. *J Clin Microbiol* 2004;42:1129–35.
31. van Embden JD, Cave MD, Crawford JT, Dale JW, Eisenach KD, Gicquel B, et al. Strain identification of *Mycobacterium tuberculosis* by DNA fingerprinting: recommendations for a standardized methodology. *J Clin Microbiol* 1993;31:406–9.
32. van Soolingen D, de Haas PE, Hermans PW, Groenen PM, van Embden JD. Comparison of various repetitive DNA elements as genetic markers for strain differentiation and epidemiology of *Mycobacterium tuberculosis*. *J Clin Microbiol* 1993;31:1987–95.
33. Vary PH, Andersen PR, Green E, Hermon-Taylor J, McFadden JJ. Use of highly specific DNA probes and the polymerase chain reaction to detect *Mycobacterium paratuberculosis* in Johne's disease. *J Clin Microbiol* 1990;28:933–7.
34. Greenstein RJ. Is Crohn's disease caused by a mycobacterium? Comparisons with leprosy, tuberculosis, and Johne's disease. *Lancet* 2003;3507–14.
35. Chiodini RJ. Crohn's disease and the mycobacterioses: a review and comparison of two disease entities. *Clin Microbiol Rev* 1989;2:90–117.
36. Chiodini RJ, Van Kruiningen HJ, Thayer WR, Coutu JA. Spheroplastic phase of mycobacteria isolated from patients with Crohn's disease. *J Clin Microbiol* 1986;24:357–63.
37. Gitnick G, Collins J, Beaman B, Brooks D, Arthur M, Imaeda T, et al. Preliminary report on isolation of mycobacteria from patients with Crohn's disease. *Dig Dis Sci* 1989;34:925–32.
38. Sechi LA, Mura M, Tanda F, Lissia A, Solinas A, Fadda G, et al. Identification of *Mycobacterium avium* subsp. *paratuberculosis* in biopsy specimens from patients with Crohn's disease identified in situ hybridization. *J Clin Microbiol* 2001;39:4514–7.
39. Richter E, Wessling J, Lugering N, Domschke W, Rusch-Gerdes S. *Mycobacterium avium* subsp. *paratuberculosis* infection in a patient with HIV, Germany. *Emerg Infect Dis* 2002;8:729–31.
40. Collins MT, Lisby G, Moser C, Chicks D, Christensen S, Reichelderfer M, et al. Results of multiple diagnostic tests for *Mycobacterium avium* subsp. *paratuberculosis* in patients with inflammatory bowel disease and in controls. *J Clin Microbiol* 2000;38:4373–81.
41. Schwartz D, Shafran I, Romero C, Piromalli C, Biggerstaff J, Naser N, et al. Use of short-term culture for identification of *Mycobacterium avium* subsp. *paratuberculosis* in tissue from Crohn's disease patients. *Clin Microbiol Infect* 2000;6:303–7.
42. Sanderson JD, Moss MT, Tizard ML, Hermon-Taylor J. *Mycobacterium paratuberculosis* DNA in Crohn's disease tissue. *Gut* 1992;33:890–6.
43. Mishina D, Katsel P, Brown ST, Gilberts EC, Greenstein RJ. On the etiology of Crohn disease. *Proc Natl Acad Sci U S A* 1996;93:9816–20.
44. Hermon-Taylor J, Bull TJ, Sheridan JM, Cheng J, Stellakis ML, Sumar N. Causation of Crohn's disease by *Mycobacterium avium* subspecies *paratuberculosis*. *Can J Gastroenterol* 2000;14:521–39.
45. Hermon-Taylor J, El-Zaatari FA. The *Mycobacterium avium* subspecies *paratuberculosis* problem and its relation to the causation of Crohn disease. In: Pedley S, Bartram J, Rees G, Dufour A, Cotruvo J, editors. *Pathogenic mycobacteria in water: a guide to public health consequences, monitoring and management*. London, UK: IWA Publishing on behalf of the World Health Organization; 2004. p. 74–94.
46. Gwozdz JM, Thompson KG, Murray A, West DM, Manktelow BW. Use of polymerase chain reaction assay for the detection of *Mycobacterium avium* subspecies *paratuberculosis* in blood and liver biopsies from experimentally infected sheep. *Aust Vet J* 2000;78:622–4.
47. Sweeney RW, Whitlock RH, Rosenberger AE. *Mycobacterium paratuberculosis* cultured from milk and supramammary lymph nodes of infected asymptomatic cows. *J Clin Microbiol* 1992;30:166–71.
48. Grant IR, Ball HJ, Rowe MT. Incidence of *Mycobacterium paratuberculosis* in bulk raw and commercially pasteurized cows' milk from approved dairy processing establishments in the United Kingdom. *Appl Environ Microbiol* 2002;68:2428–35.
49. Ellingson JL, Anderson JL, Koziczkowski JJ, Radcliff RP, Sloan SJ, Allen SE, et al. Detection of viable *Mycobacterium avium* subspecies *paratuberculosis* in retail pasteurized whole milk by two culture methods and PCR. *J Food Prot* 2005;68:966–72.
50. Greenstein RJ, Collins MT. Emerging pathogens: is *Mycobacterium avium* subspecies *paratuberculosis* zoonotic? *Lancet* 2004;364:396–7.

51. Naser SA, Schwartz D, Shafran I. Isolation of *Mycobacterium avium* subsp *paratuberculosis* from breast milk of Crohn's disease patients. *Am J Gastroenterol* 2000;**95**:1094–5.
52. Yadav D, Singh SV, Singh AV, Sharma G, Kumar P, Kumar S, et al. Prevalence of *Mycobacterium avium* subsp. *paratuberculosis* in slaughtered buffaloes and their molecular characterization. *Proceedings of the Microtech 2K4 45<sup>th</sup> Annual Conference of the Association of Microbiologists of India (AMI), NDRI, Karnal, India*; 2004, p. 144.
53. Kumar P, Singh SV, Bhatiya AK, Sevilla I, Singh AV, Whittington RJ, et al. Juvenile capri-paratuberculosis (JCP) in India: incidence and characterization of by six diagnostic tests. *Small Rumin Res* 2007; doi:10.1016/j.smallrumres.2006.10.023.
54. Bernstein CN, Nayar G, Hamel A, Blanchard JF. Study of animal-borne infections in the mucosa of patients with inflammatory bowel disease and population-based controls. *J Clin Microbiol* 2003;**41**:4986–90.
55. Corti S, Stephan R. Detection of *Mycobacterium avium* subspecies *paratuberculosis* specific IS900 insertion sequences in bulk-tank milk samples obtained from different regions throughout Switzerland. *BMC Microbiol* 2000;**2**:15.
56. Shankar H. *Prevalence and characterization of Mycobacterium avium subspecies paratuberculosis in commercial pasteurized and un-pasteurized milk supplies in North India using culture, PCR and ELISA*. MSc dissertation. Department of Microbiology, Dr B.R. Ambedkar University, Agra, UP, India; 2006.